



# **Evaluation of Research & Development Units**

## **Presentation of CLISSIS**

### **24 May 2019**



**Multidisciplinary Research  
On Social Change for  
Inclusion, Quality of Life and Citizenship**



**Duarte Vilar**  
**Director of CLISSIS**

# CLISSIS in brief

- Born in 2006 in the context of Lisbon Social Work Institute (Lisbon Lusíada University)
- Multidisciplinary team (Social Work, Psychology, Sociology, Anthropology and other)
- Wider approach on Social Intervention, Social Change, Inclusion, Quality of Life and Citizenship
- Strong linkage and involvement with public and social organizations in Lisbon and Oporto regions
- One of the 6 R&D units of ILID (Lusiada Research Institute)
- Evaluated by FCT in 2013-2014 – Good
- FCT financial support since 2015



# CLISSIS Academic Links

## Instituto Superior de Serviço Social de Lisboa (ULL)

Graduation on Social Work	Master on Social Work Master on Gerontology	PhD on Social Work
---------------------------	--	--------------------

## Instituto de Psicologia e Ciências da Educação (ULL)

Graduation on Psychology	Master on Clinical Psychology Master on Music therapy
--------------------------	--

## Instituto Superior de Serviço Social do Porto

Graduation on Social Work Graduation on Gerontology	Master on Gerontology Master on Vulnerable Children and Youth
--	--

## Researchers of Instituto Piaget and ULHT



# CLISSIS Vision

To be a scientific and technical reference which contributes throughout its activities for the development of knowledge on social problems, that may be used by social organizations, professionals and policy makers in the advance of new strategies methodologies, policies and tools to improve social inclusion, welfare and quality of life

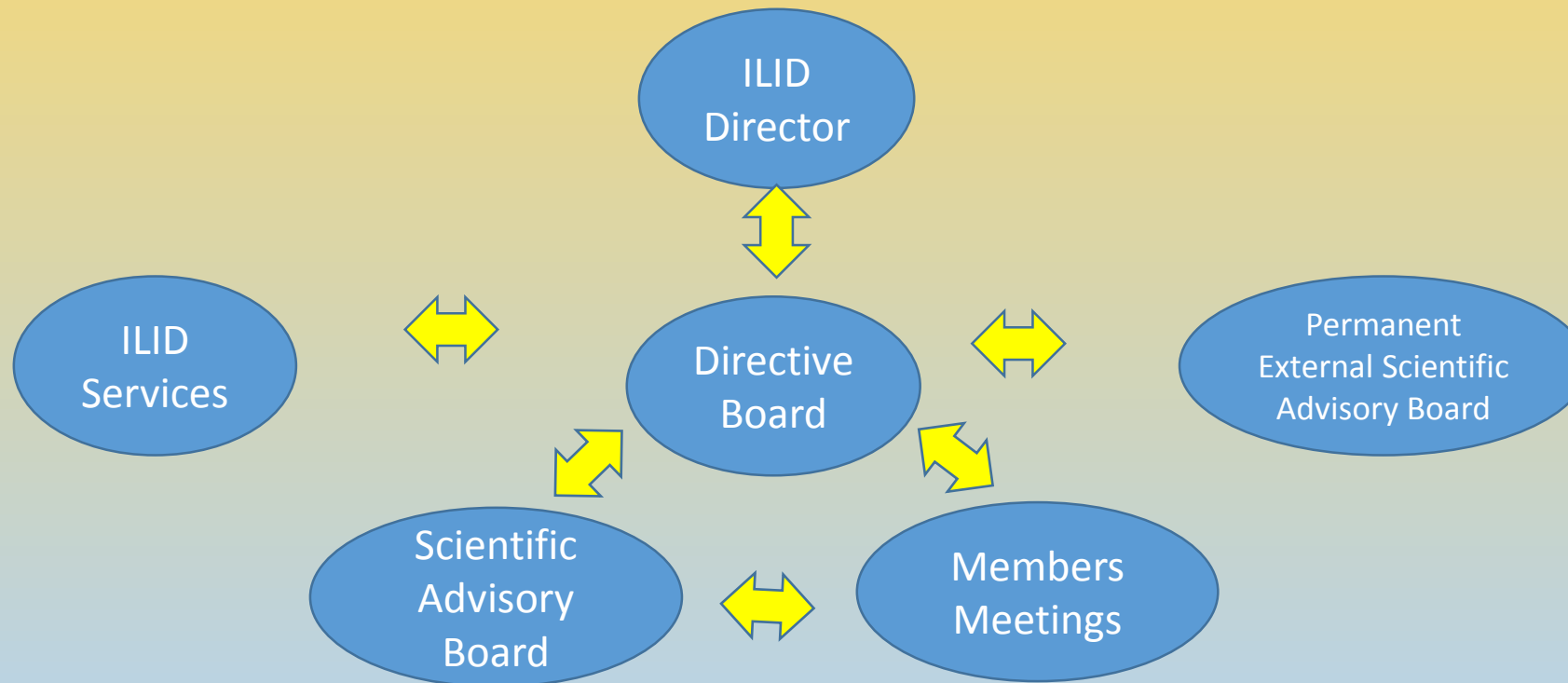


# CLISSIS Objectives

- To improve the knowledge of the different social problems of Portuguese society and their impact on social cohesion and inclusion;
- To improve the knowledge on the different kinds of social actors and organizations namely the Social Economy Sector and, specifically on the social work;
- To contribute for the evaluation and improvement of social policies, in its relationship to social, political and environmental factors;
- To contribute to the evaluation and testing of different types of social and institutional responses and strategies and methodologies of social intervention, in order to promote quality of life.



# CLISSIS Organic



# CLISSIS Research Team

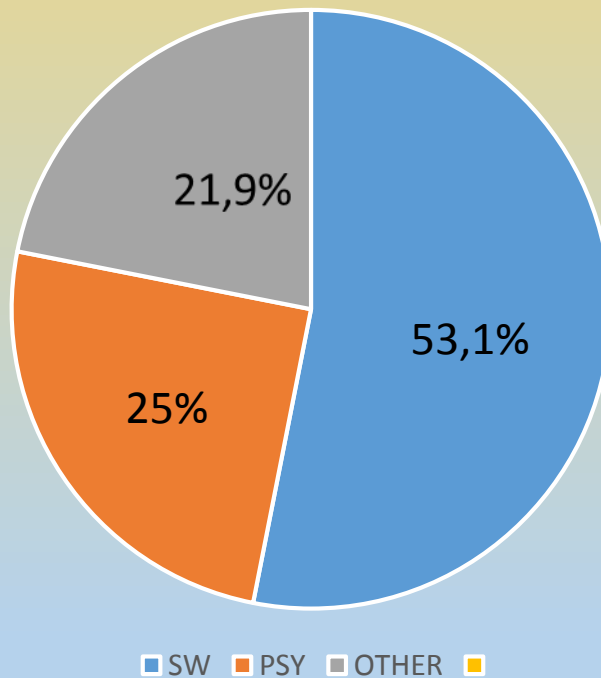
- 26 PhD integrated researchers
- 5 MhD integrated researchers (5 PhD students)
- 1 Graduated researcher (1 PhD student)
- 3 PhD collaborative researchers
- 10 MhD collaborative researchers (6 PhD students)
- 4 Graduated students (4 MhD students)
- 3 Graduation students

Total 54 members

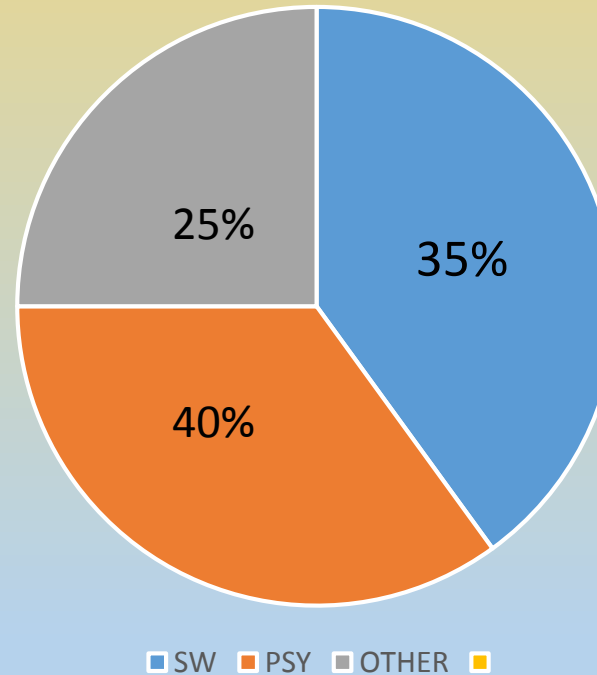


# CLISSIS Research Team

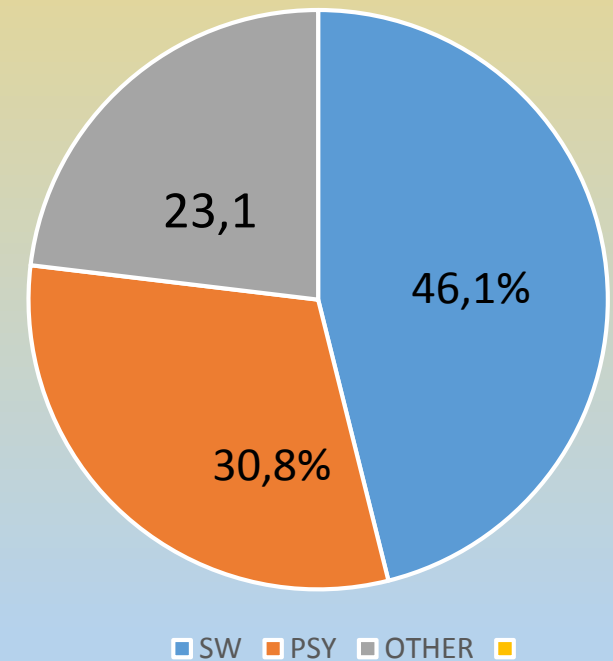
Integrated researchers



collaborative researchers

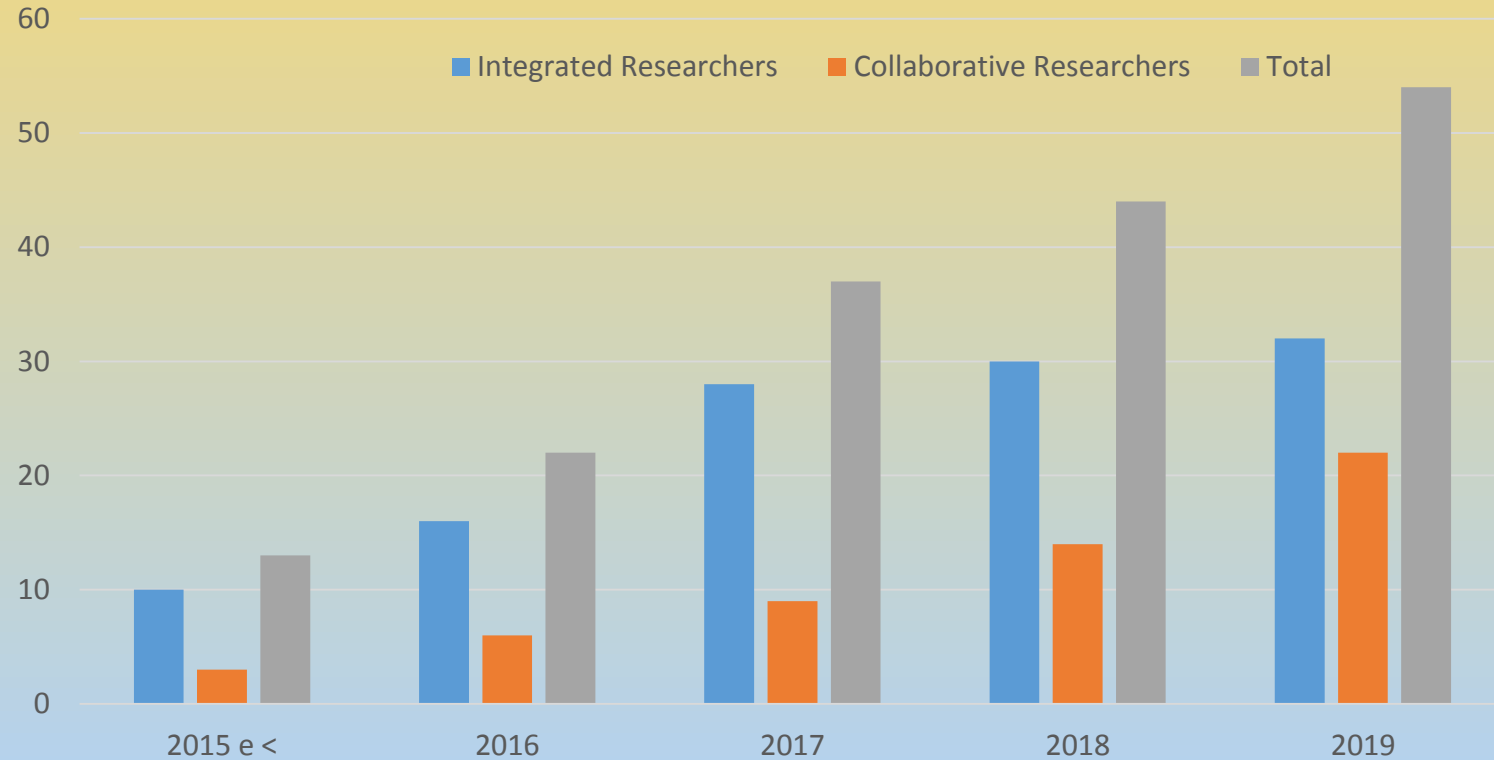


total





# CLISSIS Research Team



# Where CLISSIS projects come from?

- Individual members or groups with specific interests and professional and/or scientific expertise
- Members' involvement in social projects and/or organizations
- External national invitations
- Members international involvement and relationships
- PhD researches
- Masters' researches
- RG are organized in a bottom-up process according to the diverse and significant research activities and involvement of the members



# Research Group 1

## Social Work: History, Thought and Professional Practices

<b>Social Work History</b>	<b>PAPESS – An anamnesis of the first Social Work School in Portugal</b>
<b>Social Work Training</b>	FAS - Social Work Education and Training for Professional Values

## Research Group 2

### Quality of Life, Psychosocial Intervention and Citizenship

#### Aging

- Professional and institutional attitudes towards the sexuality of the elderly
- Aging, sexuality and quality of life
- “PORTO.IMPORTA-SE” Fighting Social Isolation of Elderly People
- Psychosocial and professional factors promoting quality of life in the process of retirement and active aging – qualitative and quantitative research
- Study of a neuropsychological evaluation battery (neuropsychological screening), quality of life and lifestyles in the aging process
- Diagnostic and Gerontologic Plan of Vila Nova de Gaia
- Overload of the Informal Caregivers

# Research Group 2

## Quality of Life, Psychosocial Intervention and Citizenship

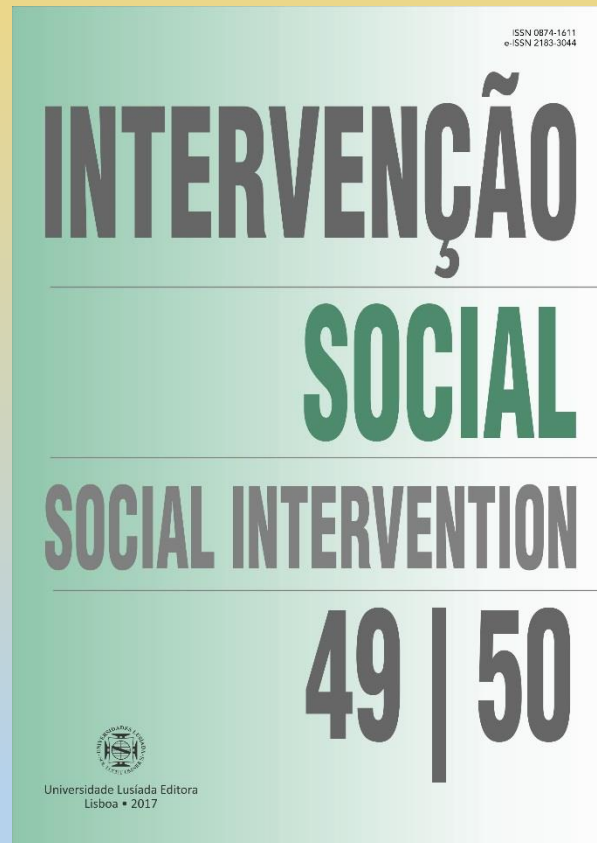
<b>Youth and Children</b>	<ul style="list-style-type: none"> <li>• Difficulties in emotional regulation as a risk factor of attitudes and beliefs in sexuality in adolescents interned in therapeutic community</li> <li>• The impact of a action-research project on the process of overcoming the problem of intergenerational poverty reproduction</li> <li>• The impact of music therapy on emotional and social skills of at-risk youth in a residential setting</li> <li>• Ball, Mandinga and Pirouettes: Socio sportive experience and youth identities in the Padre Cruz neighborhood</li> <li>• Well-being and health behavior in children and adolescents</li> </ul>
<b>Families</b>	<ul style="list-style-type: none"> <li>• <b>Parental Profile and Children's Quality of Life</b></li> </ul>
<b>Other vulnerable groups</b>	<ul style="list-style-type: none"> <li>• <b>Brain, Psychoactive Substances and Social Environment: from dependencies to a new life project</b></li> <li>• <b>APIFFAS – Best practices and policies directed to Homeless People</b></li> <li>• <b>Perceived quality of life of prisoners</b></li> </ul>

<b>Research Group 3</b> <b>Etnomethodology and</b> <b>Conversational</b> <b>analysis</b>	<b>Conversation</b> <b>al Analysis</b> <b>and Social</b> <b>Work</b>	<ul style="list-style-type: none"> <li>• <b>A conversation analytical approach to Social Work encounters in Portugal</b></li> </ul>
	<b>Conversation</b> <b>al Analysis</b> <b>applied on</b> <b>specific social</b> <b>areas</b>	<ul style="list-style-type: none"> <li>• <b>Endo of Life Trajectories and Cares</b></li> <li>• <b>Parcours inclusif du jeune enfant ayant un trouble du spectre autistique scolarisé dans les Unités d’Enseignement Maternelle (UEM)</b></li> </ul>
<b>Research Group 4</b> <b>Work Contexts,</b> <b>Corporate Social</b> <b>Responsibility</b>	<b>Work</b> <b>contexts</b>	<ul style="list-style-type: none"> <li>• <b>Aging, unemployment and social exclusion</b></li> <li>• <b>Aging management in the context of professional life)</b></li> </ul>
	<b>CSR</b>	<ul style="list-style-type: none"> <li>• <b>Perceptions of Business Students Towards Ethics and Sustainability</b></li> <li>• <b>Effects for Scholars In CSR and Sustainable Management Teaching</b></li> </ul>

# CLISSIS Members Publications 2015-2018

	RG 1	RG 2	RG 3	RG 4	total
National Books	1	14		3	18
International books	2	3	2	1	8
PhD Theses	2			2	
National Scientific Journals	5	21	1	8	34
International Scientific Journals	6	44	4	14	68
Total	16	82	7	28	128

# CLISSIS Journals





# CLISSIS and Scientific Events (2015-2018)

## Regular events promoted by CLISSIS:

- International Social Work Congress (every 2 years)
- International Congress on Child and Adolescents Psychology (annual)
- Gerontology Days in Lusíada (annual)
- Social Work Journeys (each trimester)
- Forensic Psychology Meeting (annual)

## Participation in Scientific Events: papers, posters, organization

- 116 presences in international seminars and conferences
- 105 presences in national seminars and conferences
- 81 presences in events organizing and/or scientific boards



# CLISSIS International Relationships

## International agreements

<http://clissis.ulusiada.pt/Coopera%C3%A7%C3%A3o/Parcerias>

## International networks

<http://clissis.ulusiada.pt/Coopera%C3%A7%C3%A3o/Redes>

## International connections

<http://clissis.ulusiada.pt/Coopera%C3%A7%C3%A3o/Mapa>



# CLISSIS 2015-2018 Major achievements

1. Significant increase of the research team dimension
2. Significant increase of the number of research projects
3. Consolidation of groups and areas of research
4. Significant increase in the publications and presence in conferences
5. Significant increase in the international involvement
6. Strength in the local partnerships with social organizations
7. Active linkage with Social Work PhD and existent masters
8. Gradual involvement of young researchers



# CLISSIS 2018-2022

1. To increase CLISSIS scientific production
2. To strength CLISSIS involvement with social projects and organizations
3. To expand and to consolidate national partnerships
4. To consolidate and expand of international partnerships
5. To contribute to the scientific initiation of young students
6. To strength CLISSIS involvement in the post graduate education
7. To strength CLISSIS visibility in scientific and professional communities
8. To increase and diversify CLISSIS human and financial resources.



# To increase CLISSIS scientific production

1. Consolidate the existent RG and areas and create 2 new Research Groups: Social Policies, social economy sector (3<sup>rd</sup> sector)
2. Continue or conclude the existent projects
3. New projects (some already started) :
  - Social Work Virtual Museum
  - Extend FAS project to all SW schools in Portugal
  - Social Work in school setting
  - Better Aging 1 – Physical, Psycho- social Quality of Life
  - Better Aging 2 – Cultural and recreational needs
  - Vulnerable Youth (Lisbon, Oporto, Castro Verde)
  - ETIC – End of Life Trajectories in Care
  - Parcours inclusif du jeune enfant ayant un trouble du spectre autistique scolarisé dans les Unités d'Enseignement Maternelle (UEM)
  - Health Management: Impact of Organizational Factors, Psychosocial Factors and Quality of Life of Health Professionals on the results in Hospital Organizations



# To strength CLISSIS involvement with social projects and organizations and to expand and to consolidate national partnerships

- Integration of ISSSL, IPCE and ISSSP **local networks** with (more than 250) social organizations (municipalities, public health and social institutions, NGO) in CLISSIS activities (diagnostic studies, projects' evaluation)
- Implementation of the recently established agreements with **major social organizations** such as SCML (Lisbon Misericord House), UDIPSS -Federation of IPSS (Non profit Social Solidarity Institutions), CARITAS, Casa PIA (Vulnerable children and adolescents institution)and CVP (Portuguese Red Cross)
- **Social Intervention Laboratory** (consortium with other R&D units)



# To consolidate and expand international partnerships

- To consolidate current involvement in **international networks** (DANASWAC, GIS Hibryda IS, AIFRIS, WHO – Health Behavior of School Aged Children)
- To develop recent **established agreements** (University of Rouen, HES.SO, Universidade São Paulo, Universidad Castilla La Mancha)
- To challenge international partners for **international research consortiums** on CLISSIS relevant research areas)





# To strength CLISSIS intervention in the post grade education

## To contribute to the scientific initiation of young students

- Integration and **provision of scientific, financial and logistic support to the students of Social Work PhD** currently running in Lisbon Lusiada (ULL)
- Selective **scientific, financial and logistic support of relevant master researches** currently running in Lisbon Lusiada (ULL) and in Oporto Social Work Institute (ISSSP)
- Continuation of **invitations of masters and graduation students** to collaborate in CLISSIS projects in ULL and ISSSP





# To strength CLISSIS visibility in a perspective of open science

- The **scientific journals** "Intervenção Social" and "Revista da Psicologia da Criança e do Adolescente" will continue to be published and will be **indexed**
- **International Congresses** of Social Work (2018, 2020 and 2022) and the five International Congress of Psychology of Childhood and Adolescence (each year) will be organized as well the participation in other **national and international events**.
- CLISSIS members will be challenged to **disseminate their results in the media**, through articles, and interviews



## To increase CLISSIS human and financial resources

- CLISSIS will increase, at least, the number of integrated PHD members in one third,
- CLISSIS will host PHD and Post Doc fellowship students
- CLISSIS, together with ILID (Lusiada Research and Development Institute) will respond to other funding opportunities to **diversify its sustainability**.

